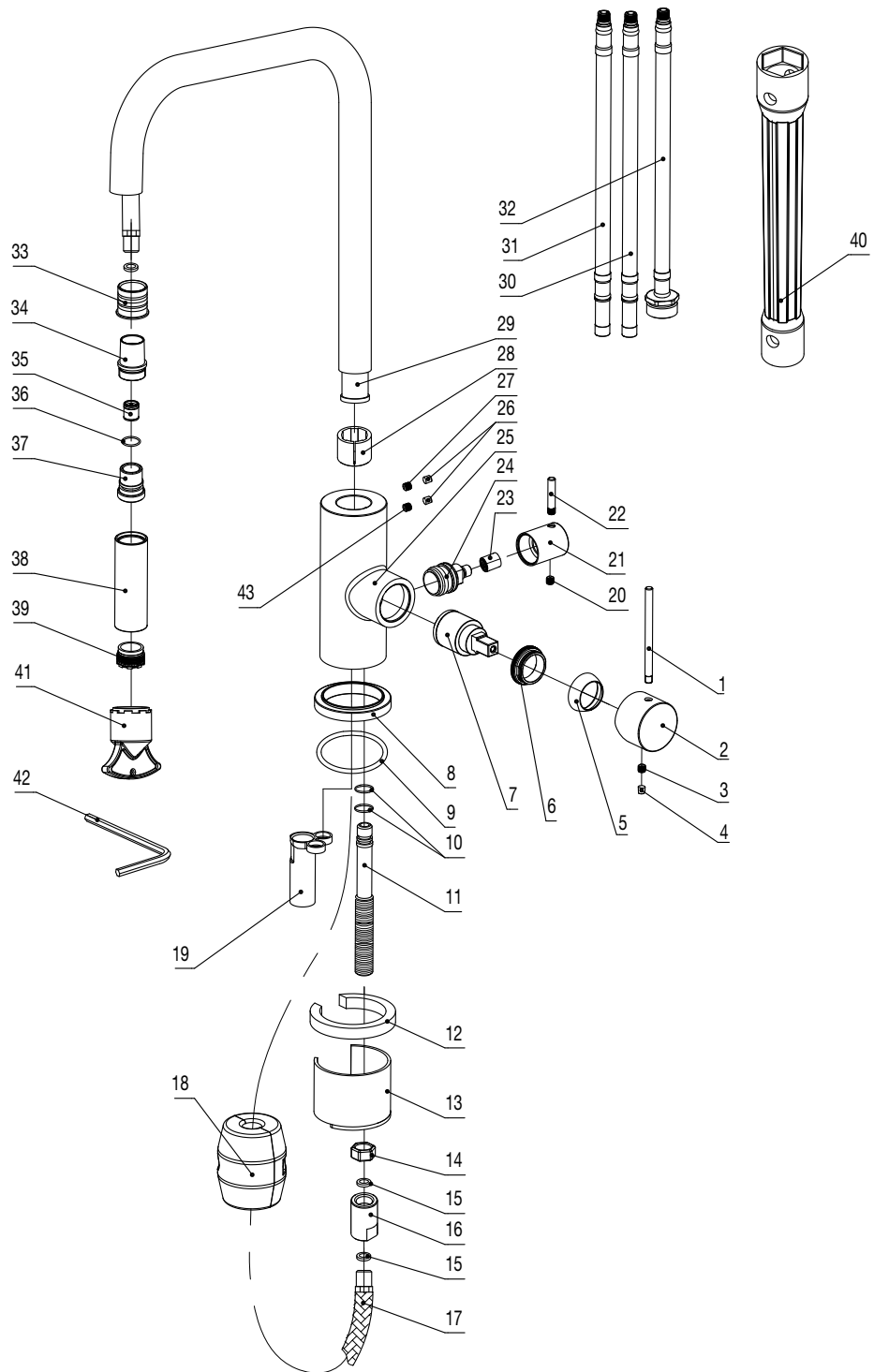


- 1 Handle bar
- 2 Handle base
- 3 Inner hex screw
- 4 Rubber
- 5 Cover ring
- 6 Screw nut
- 7 Cartridge
- 8 Base
- 9 O ring
- 10 O ring
- 11 Outlet connection
- 12 Plastic horseshoe
- 13 Horseshoe
- 14 Hex nut
- 15 Flat rubber gasket
- 16 Connector
- 17 Flexible hose
- 18 Weight
- 19 Sleeve
- 20 Inner hex screw
- 21 Handle bar
- 22 Handle base
- 23 Spline sleeve
- 24 Cartridge
- 25 Body
- 26 Decoration cover
- 27 Inner hex screw
- 28 Rubber
- 29 Spout
- 30 Flexible hose
- 31 Flexible hose
- 32 Flexible hose
- 33 Sleeve
- 34 Shower head joint
- 35 Check valve
- 36 O ring
- 37 Inner shower joint
- 38 Shower head cover
- 39 Aerator
- 40 Wrench
- 41 Wrench
- 42 Wrench
- 43 Inner hex screw



# Steel Accent Square Amber D

Art no: 30117 RSK: 8311448

**SCANDTAP®**  
BATHROOM CONCEPTS

Scandtap AB, Olofsdalsvägen 21, 302 41 Halmstad, Sweden  
info@scandtap.com, www.scandtap.com

